

# Pro Series Juicer

**Sunkist**  
FOODSERVICE EQUIPMENT

Quality products. Built to last.



## Proven performance juicers



### INTERMITTENT USE

## Pro Series™ Juicer

- Compact size—Perfect for Back of Bar  
- 11<sup>3</sup>/<sub>4</sub>" (30cm) tall, 7<sup>1</sup>/<sub>2</sub>" (19cm) diameter
- Able to extract up to 10 gallons (37 liters) per hour
- Quick & easy cleaning (3 lift-off dishwasher safe parts)
- Quiet, high torque motor
- Voltage: AC 115/60hz
- One-year warranty

### ACCESSORIES



**Sunkist**  
FOODSERVICE EQUIPMENT

See your preferred FSE Distributor

**AQ** AutoQuotes  
from revalize

 **sunkist consumer call center: (800) 572-3331 / +1 910-693-4277**

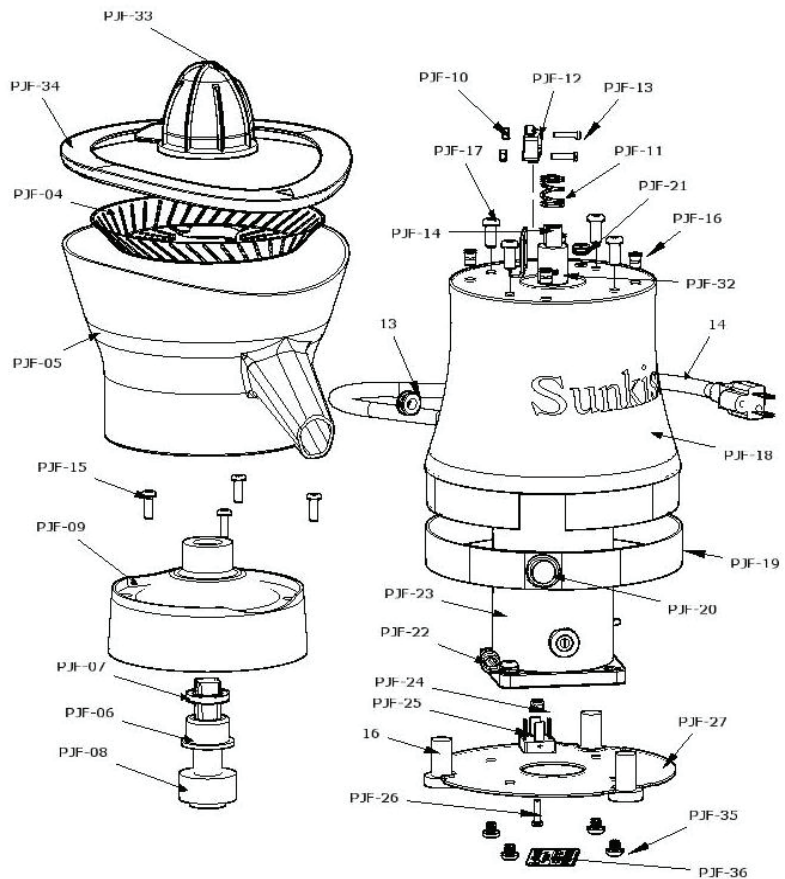
 **sunkistequipment.com**

## Pro Series Juicer Information



MODEL	COLOR	DESCRIPTION
PJF-A1	Black	115V 50/60hz 900RPM

<b>PART</b>	<b>DESCRIPTION</b>
PJF-04	Strainer
PJF-05	Dome Spout Assembly
PJF-06	Bearing, Delrin
PJF-07	Rotary Seal
PJF-08	Female Coupling
PJF-09	Dome Covering
PJF-10	4-40 Nylock Nut
PJF-11	Spring
PJF-12	Micro Switch
13	Electrical Cord Bushing
PJF-13	4-40 x .625 Screw
14	Electrical Cord
PJF-14	Male Coupling
PJF-15	10-32 x .625 Screw
16	Rubber Feet (3)
PJF-16	10-32 Rivet Nut
PJF-17	1/4-20 x .625 Screw
PJF-18	Motor Housing
PJF-19	Trim Ring
PJF-20	On/Off Switch
PJF-21	Upper Grommet
PJF-22	Wire Clip
PJF-23A	Motor, 115/60V



## SPECIFICATION

		<b>SPECIFICATION</b>	
PJF-24	6-32 Nylock Nut	Chrome plated steel housing.	
PJF-25	Power Rectifier	Corrosion proof plastic dome, spout & bowl support	
PJF-26	6-32 x .625 Screw	Listed by UL, CUL, CE, CCC, EPH	
PJF-27	Base Plate	Shipping Weight	13 lbs.
PJF-32	Roll Pin 1/8"	Net Weight	11½ lbs.
PJF-33	Extracting Bulb	Overall Dimensions	11¾" tall, 7½" diameter
PJF-34	Flexible Trim Ring	Carton Size	9½" W x 9¼" L x 13" H
PJF-35	1/4-20 x 1/4 Screw	Motor	Hi-Torque 18.9 in-lbs., 900 RPM
PJF-36	Data Plate		