



Quality products. Built to last.

## commercial series citrus juicer



- ✓ Quiet, yet heavy-duty, high-torque motor
- ✓ Unique oscillating strainer
- ✓ Able to extract up to 20 gallons (74 liters) per hour
- ✓ Years of proven performance
- ✓ 3 Interchangeable extracting bulbs  
Orange, Lemon/Lime & Grapefruit
- ✓ Quick & easy cleaning – 4 lift-off  
dishwasher safe parts
- ✓ Voltage: AC 115/60, AC 230/50, AC 230/60
- ✓ Two-year warranty
- ✓ Crafted in the USA

Available from your  
International Export Agent

### SUNKIST

Tel: 800.383.7141  
Fax: 909.822.2125

10730 Bell Court  
Rancho Cucamonga, CA 91730  
[www.sunkistequipment.com](http://www.sunkistequipment.com)

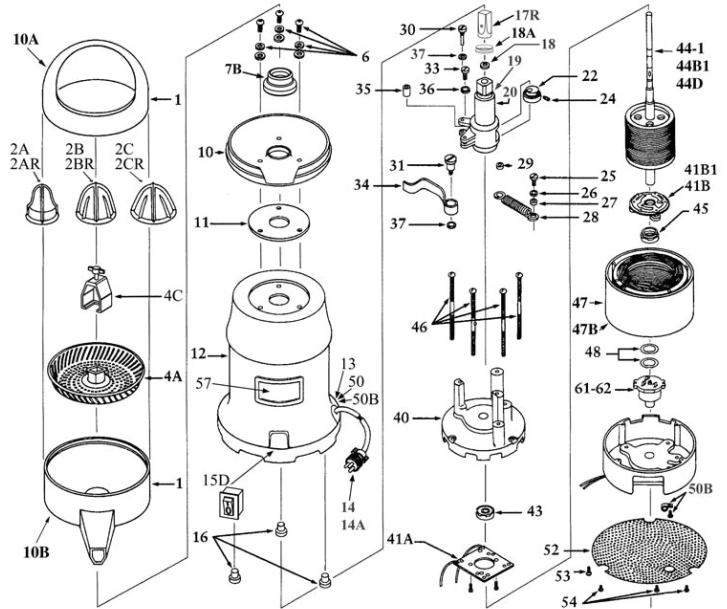


MODEL	COLOR	DESCRIPTION
J-1	CHROME	115V 60hz 1725 RPM
J-2	CHROME	230V 50hz 1425 RPM
J-2CCC	CHROME	230V 50hz 1425 RPM China Certified
J-3	CHROME	115V 50hz 1725 RPM

MODEL	COLOR	DESCRIPTION
J-4	CHROME	230V 60hz 1425 RPM
J-1BL	BLUE	115V 60hz 1725 RPM Minimum 25pcs
J-2BL	BLUE	230V 50hz 1425 RPM Minimum 25pcs

**PART DESCRIPTION**

- 1 Plastic Bowl Assembly incl. Dome (10A), spout (10B) & Bowl Support (10)
- 2 Extracting Bulb Set w/metal insert (Only use with 17 or 17C)
  - A. Lemon/Lime fits #8 model
  - B. Orange fits #7 & #8 models
  - C. Grapefruit fits #7 & #8 models
- 2R Extracting Bulb Set w/o metal insert (Only use with 17R)
  - A. Lemon/Lime fits #8 model
  - B. Orange fits #7 & #8 models
  - C. Grapefruit fits #7 & #8 models
- 3 Lever Lock & Screws for Strainer (For #7 juicer-not illustrated)
- 4 Strainer w/Lever Lock & Screws (For #7 juicer-not illustrated)
- 4A Strainer for #8 juicer
- 4C Strainer Puller for #8 juicer
- 6 Bowl Support Screws, Spacers, Washers (set of 3)
- 7 Umbrella Ring w/Set Screw & Gasket (Not illustrated)
- 7B Umbrella Seal  
(only for grooved eccentric housings, replaces 7, 8, & 9)
- 8 Umbrella Ring Set Screw (incl'd w/7 not illustrated)
- 9 Umbrella Ring Gasket (incl'd w/7 not illustrated)
- 10 Plastic Bowl Support only (incl'd w/1)
- 10A Plastic Dome only (incl'd w/1)
- 10B Plastic Spout only (incl'd w/1)
- 11 Bowl Support Gasket
- 12 Chrome Motor Housing
- 13 Electric Cord Bushing
- 14 Electric Cord 115/60
- 14A Robber Cord-Export
- 15 Toggle Switch w/Switch Guard (not illustrated)
- 15D Rocker Switch w/Switch Seal
- 15E Connectors for 14 & 15D (Set of 4 not illustrated)
- 16 Rubber Feet (set of 3)
- 17 Shaft Tip w/Pin (Only use w/2A, 2B and/or 2C not illustrated)
- 17C Shaft Tip w/Pin (Graduated tip-not illustrated)
- 17R Shaft Tip w/Pin (Flat tip-only use w/2AR, 2BR, 2CR not illustrated)
- 18 Eccentric Housing Gasket (incl'd w/20)
- 18A Shaft Tip Gasket (fits 17C & 17R)
- 19 Brass Tube
- 20-7 Eccentric Housing w/Bearings, Gasket & Brass Tube #7 juicer
- 20-8 Eccentric Housing w/Bearings, Gasket & Brass Tube #8 juicer
- 20-8C Eccentric Mechanism #8 juicer
- 22 Eccentric Hub w/Bearing & Screw
- 24 Eccentric Hub Hex Screw 1/4-20x1/2
- 25 Spring Screw to Motor Mount 10-32
- 26 Lock Washers incl. 36 (2) & 37 (3)
- 27 Bronze Bushing Coil Spring to Motor Mount 9/64 x 3/8 x 1/4
- 28 Coil Spring
- 29 Bronze Bushing Coil spring to Ecc. Housing 9/63 x 3/8 x 3/16
- 30 Arm Screw-Small 1/4-32 x 1 1/16
- 31 Arm Screw-Large 1/4-20 x 29/32
- 33 Spring Screw to Ecc. Housing 1/4-32
- 34 Eccentric Arm
- 35 Ecc. Arm Bronze Bushing 1/2 x 3/16 x 5/16
- 36 Lock Washer, 3/16, Internal Tooth
- 37 Lock Washer, 1/4, Internal Tooth
- 40 Top Motor Casting



**SPECIFICATION**

- Chrome plated steel housing.
- Corrosion proof plastic dome, spout & bowl support.
- Listed by UL, CUL, CE, CCC, NSF
- Shipping Weight 37 pounds
- Net Weight 31 pounds
- Overall Dimensions 17" high, 8" diameter
- Cube 1.12
- Carton Size 22 3/4" x 9 3/4" x 9 3/4"
- Horsepower 1/4 continuous-operating

**PART DESCRIPTION**

- 41A Stationary Motor Switch
- 41B Centrifugal Motor Switch 115V
- 43 Motor Bearing-top or bottom
- 44-1 Rotor w/Shaft 115/60
- 44B1 Rotor w/Shaft 230/50
- 44D Rotor w/Shaft 230/60
- 45 Motor Bearing-top or bottom
- 46 Motor Screws (set of 4)
- 47 Stator (winding) 115/60
- 47B Stator (winding) 230/50
- 48 Tension Washers (set of 2)
- 50 Electric Cord Strain Relief; J-2
- 50B Electric Cord Strain Relief; J-1, J-4
- 52 Perforated Base Plate
- 53 Ground Screw w/Lock Washer for J-1, J-2 (set of 2)
- 54 Base Plate Screws for J-1, J-4 3/ea
- 57 Logo Plate, Label & Fastners
- 61 Thermal Overload 115/60
- 62 Thermal Overload 230/50
- 64 Model #7 or #8 Motor 115/60 4.3 amp - 1725 rpm
- 65 Model #7 or #8 Motor 230/50 2.5 amp - 1425 rpm
- 67 Model #7 or #8 Motor