



Quality products. Built to last.

commercial series
citrus juicer



- ✓ Quiet, yet heavy-duty, high-torque motor
- ✓ Unique oscillating strainer
- ✓ Able to extract up to 20 gallons (76 liters) an hour
- ✓ Years of proven performance
- ✓ 3 Interchangeable extracting bulbs
Orange, Lemon/Lime & Grapefruit
- ✓ Quick & easy cleaning – 4 lift-off
dishwasher safe parts
- ✓ Voltage: AC 115/60, AC 230/50, AC 230/60
- ✓ Five-year warranty
- ✓ Crafted in the USA



Available from your
International Export Agent

HD SHELDON & CO., INC.

143 West 29th Street

New York, NY 10001

T: 212.924.6920

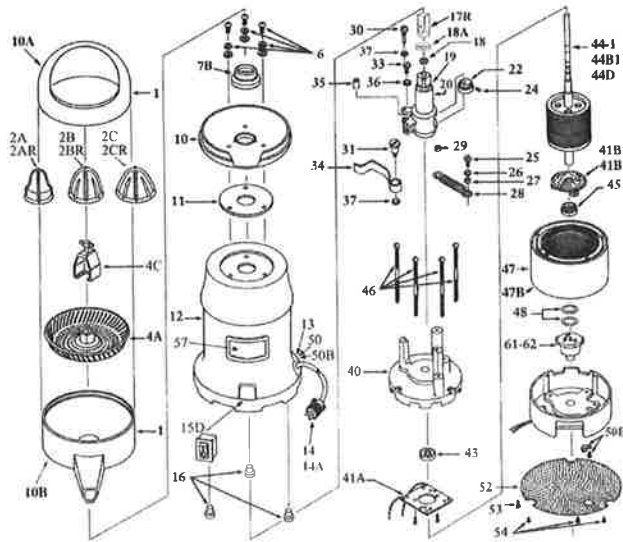
F: 212.627.1759

E: sales@hdsheeldon.com

W: www.hdsheeldon.com



Commercial Series Citrus Juicer Information



Specifications

- Chrome plated steel housing.
- Corrosion proof plastic dome, spout & bowl support.
- Listed by.....**UL, CUL, CE, CCC, NSF**
- Shipping weight.....37 pounds
- Net weight.....31 pounds
- Overall dimensions.....17" high, 8" diameter
- Cube.....1.12
- Carton size.....22 3/4" x 9 3/4" x 9 3/4"
- Horsepower.....1/4 continuous-operating

Part #	Description	Part #	Description	Part #	Description
1	Plastic Bowl Assembly incl. dome (10A), spout (10B) & Bowl Support (10)	15E	Connectors for 14 & 15D (set of 4 not illustrated)	41A	Stationary Motor Switch
2	Extracting Bulb Set w/metal insert (Only use with 17 or 17C) A. Lemon/Lime fits #8 model B. Orange fits #7 & #8 models C. Grapefruit fits #7 & #8 models	16	Rubber Feet (set of 3)	41B	Centrifugal Motor Switch-115V
2R	Extracting Bulb Set w/o metal insert (Only use with 17R) A. Lemon/Lime fits #8 model B. Orange fits #7 & #8 models C. Grapefruit fits #7 & #8 models	17	Shaft Tip w/Pin (only use w/2A, 2B and/or 2C not illustrated)	41B1	Centrifugal Motor Switch-230V
3	Lever Lock & Screws for Strainer (for #7 juicer-not illustrated)	17C	Shaft Tip w/Pin (graduated tip-not illustrated)	43	Motor Bearing-top or bottom
4	Strainer w/Lever Lock & Screws (for #7 juicer-not illustrated)	17R	Shaft Tip w/Pin (flat tip-only use w/2AR, 2BR, 2CR not illustrated)	44-1	Rotor w/Shaft 115/60
4A	Strainer for #8 juicer	18	Eccentric Housing Gasket (incl'd w/20)	44B1	Rotor w/Shaft 230/50
4C	Strainer Puller for #8 juicer	18A	Shaft Tip Gasket (fits 17C & 17R)	44D	Rotor w/Shaft 230/60
6	Bowl Support Screws, Spacers, Washers (set of 3)	19	Brass Tube	45	Motor Bearing-top or bottom
7	Umbrella Ring w/Set Screw & Gasket (not illustrated)	20-7	Eccentric Housing w/Bearings, Gasket & Brass Tube #7 juicer	46	Motor Screws (set of 4)
7B	Umbrella Seal (only for use on grooved eccentric housings, replaces 7, 8, & 9)	20-8	Eccentric Housing w/Bearings, Gasket & Brass Tube #8 juicer	47	Stator (winding) 115/60
8	Umbrella Ring Set Screw (incl'd w/7 not illustrated)	20-8C	Eccentric Mechanism #8 juicer	47B	Stator (winding) 230/50
9	Umbrella Ring Gasket (incl'd w/7 not illustrated)	22	Eccentric Hub w/Bearing & Screw	48	Tension Washers (set of 2)
10	Plastic Bowl Support only (incl'd w/1)	24	Eccentric Hub Hex Screw 1/4-20x1/2	50	Electric Cord Strain Relief; J-2
10A	Plastic Dome only (incl'd w/1)	25	Spring Screw to Motor Mount 10-32	50B	Electric Cord Strain Relief; J-1, J-4
10B	Plastic Spout only (incl'd w/1)	26	Lock Washers incl. 36 (2) & 37 (3)	52	Perforated Base Plate
11	Bowl Support Gasket	27	Bronze Bushing Coil Spring to Motor Mount 9/64 x 3/8 x 1/4	53	Ground Screw w/Lock Washer for J-1, J-2 (set of 2)
12	Chrome Motor Housing	28	Coil Spring	54	Base Plate Screws for J-1, J-4 3/ea
13	Electric Cord Bushing	29	Bronze Bushing Coil spring to Ecc. Housing 9/63 x 3/8 x 3/16	57	Logo Plate, Label & Fastners
14	Electric Cord 115/60	30	Arm Screw-Small 1/4-32 x 1 1/16	61	Thermal Overload 115/60
14A	Robber Cord-Export	31	Arm Screw-Large 1/4-20 x 29/32	62	Thermal Overload 230/50
15	Toggle Switch w/Switch Guard (not illustrated)	33	Spring Screw to Ecc. Housing 1/4-32	64	Model #7 or #8 Motor 115/60 4.3 amp - 1725 rpm
15D	Rocker Switch w/Switch Seal	34	Eccentric Arm	65	Model #7 or #8 Motor 230/50 2.5 amp - 1425 rpm
		35	Ecc. Arm Bronze Bushing 1/2 x 3/16 x 5/16	67	Model #7 or #8 Motor 230/60 2.2 amp - 1725 rpm
		36	Lock Washer, 3/16, Internal Tooth		
		37	Lock Washer, 1/4, Internal Tooth		
		40	Top Motor Casting		